

Anti-HER2 hlgG1 Reference Antibody(Marbio)

Product Information

Product Name	Anti-HER2 hlgG1 Reference Antibody(Marbio)
Storage temp.	Store at 2-8°C short term (1-2 weeks).Store at $\leq -20^{\circ}\text{C}$ long term. Avoid repeated freeze-thaw.
Catalog# / Size	GM-87130MAB-1mg / 1 mg GM-87130MAB-5mg / 5 mg GM-87130MAB-25mg / 25 mg GM-87130MAB-50mg / 50 mg GM-87130MAB-100mg / 100 mg

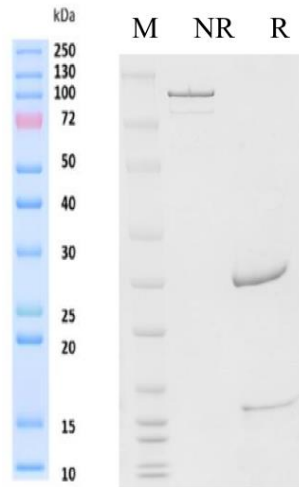
Antibody Information

Expression System	CHO
Aggregation	< 5% as determined by SEC-HPLC
Purity	> 95% as determined by SDS-PAGE
Endotoxin	< 1 EU/mg, determined by LAL gel clotting assay
Sterility	0.2 μm Filtered
Target	Her2
Clone	Margetuximab
Alternative Names	CD340, HER-2, HER-2/neu, ERBB2, MLN 19, NEU, NGL, TKR1, VSCN2, c-ERB-2, c-ERB2
Source/Isotype	Human IgG1(RDEL), Kappa
Application	Flow cytometry
Description	Human epidermal growth factor 2 is also known as erbB-2 and Neu; it is a member of the ErbBs or type I receptor tyrosine kinase family, which also includes the epidermal growth factor receptor 1 (EGFR or HER1), erbB-3 (HER3), and erbB-4 (HER4). Amplification of the ErbB2 gene and overexpression of its product are detected in almost 40% of human breast cancers. Binding of the c-Cbl ubiquitin ligase to ErbB2 at Tyr1112 leads to ErbB2 poly-ubiquitination and enhances degradation of this kinase. ErbB2 is a key therapeutic target in the treatment of breast cancer and other carcinomas and targeting the regulation of ErbB2 degradation by the c-Cbl-regulated proteolytic pathway is one potential therapeutic strategy.
Formulation	phosphate-buffered solution, pH 7.4.

Version:3.1

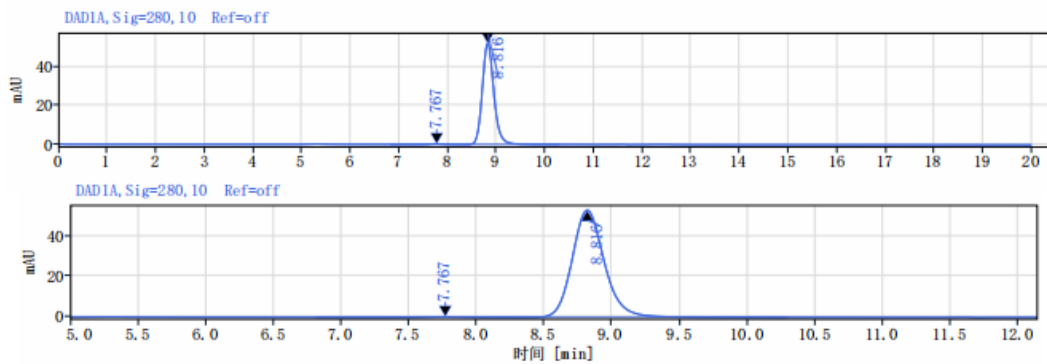
Data Examples

SDS-PAGE



On SDS-PAGE under reducing (R)/non-reducing(N-R) condition. The gel was stained overnight with Coomassie Blue. The purity of the protein is greater than 95%.

SEC-HPLC



The purity of this product is more than 95% verified by SEC-HPLC

Data Examples

Flow cytometry

H_HER2(ERBB2) CHO-K1 Cell Line (Catalog # GM-C18996) was stained with Anti-HER2 hIgG1 Reference Antibody(Marbio) (Catalog # GM-87130MAB) or isotype control antibody, followed by anti-Human IgG APC-conjugated Secondary Antibody.

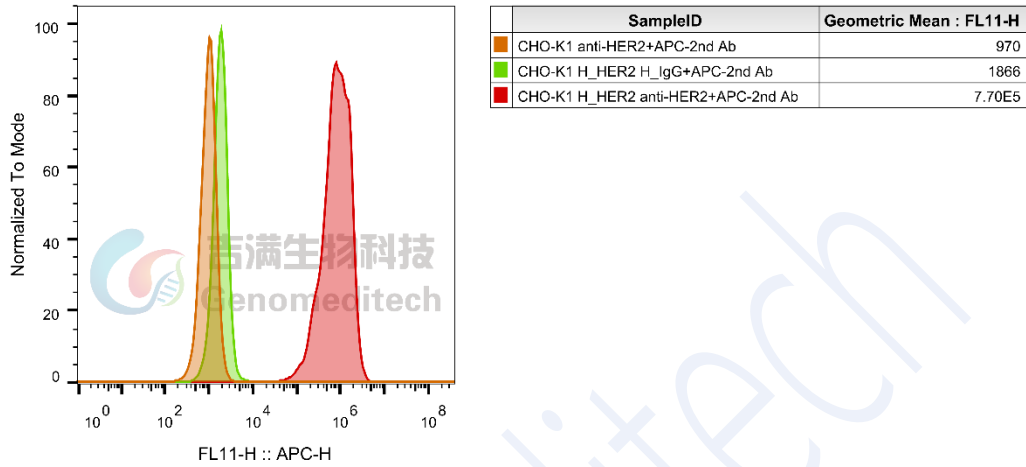


Fig. FACS